

BEAULIGHT® LCA-25F

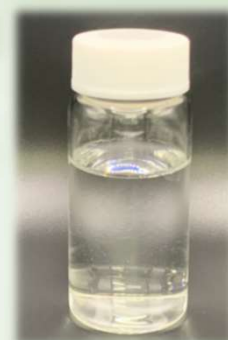


New category: Ether carboxylate type anionic surfactant



◆ Feature

- Ether carboxylate type anionic surfactant
→ Low irritation & Refreshing feeling
- Derived from Narrow Distribution of Ethylene Oxide
- Highly Compatible with Common Surfactants
- Bio-Degradable & Sulfate Free
- RSPO certification acquired(Spring 2023).

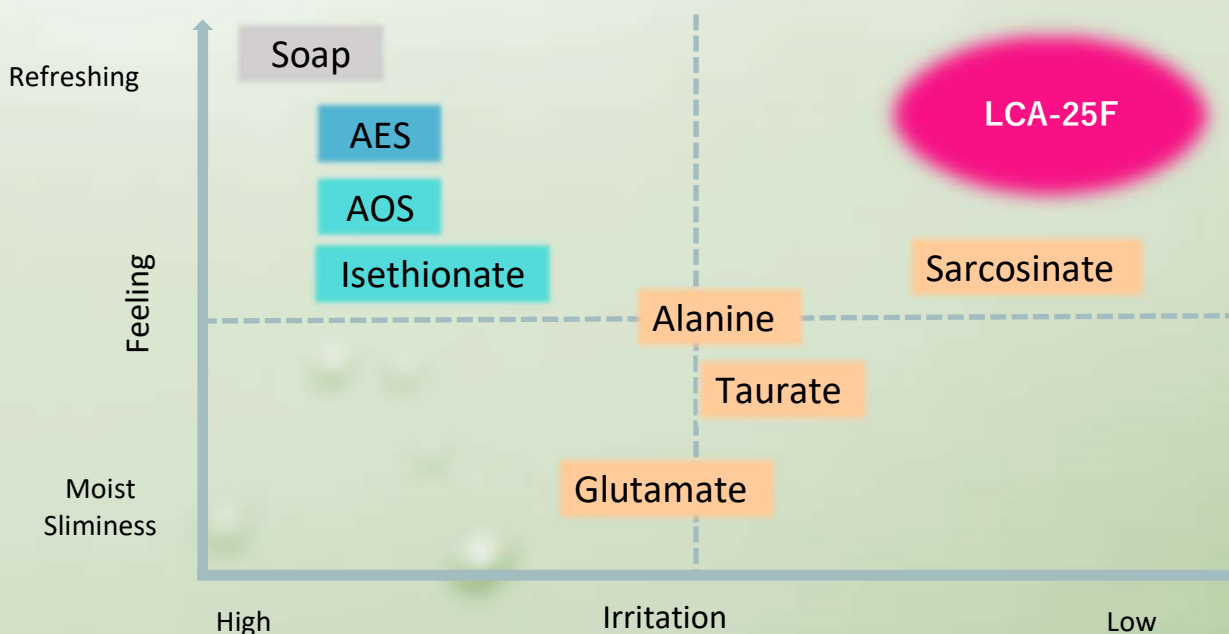


◆ Component

INCI Name	Evaporated residue	Appearance
Sodium Laureth-4 Carboxylate	28%	Liquid, Clear, Colorless to Yellowish

◆ LCA-positioning

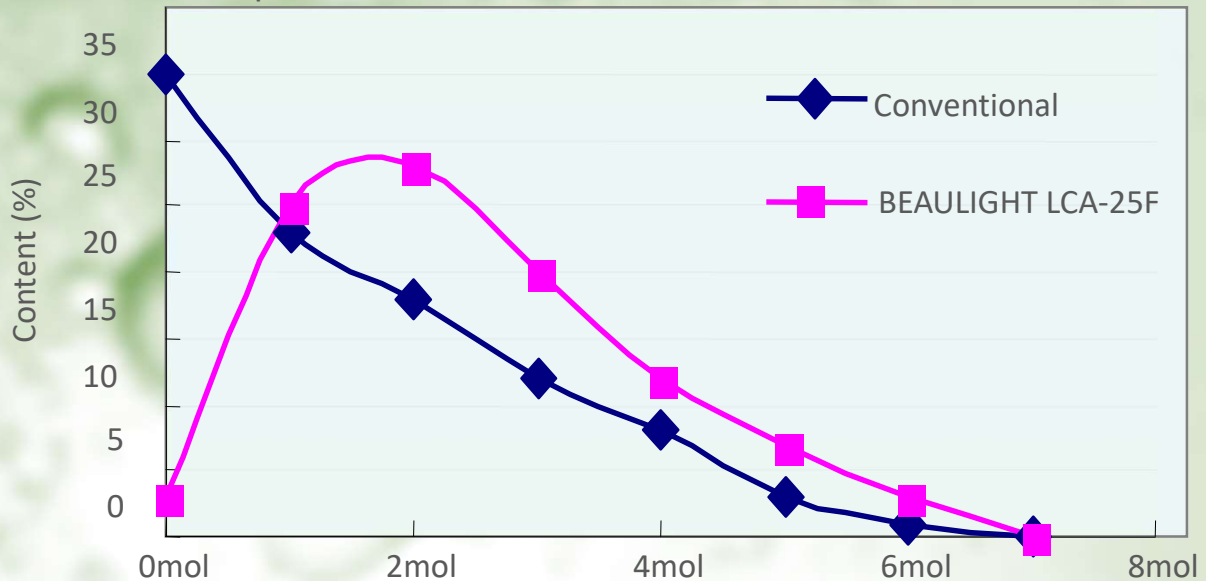
Low irritation and Refreshing feeling.



◆ Alkylene Oxide Adduct(AOA) Narrowing Technology



The number of EO adducted
Composition of "SODIUM LAURETH-4 CARBOXYLATE"



■ Strengths

- ✓ Reduced content of unreacted alcohol
- ✓ Sharpened EO addition mole distribution

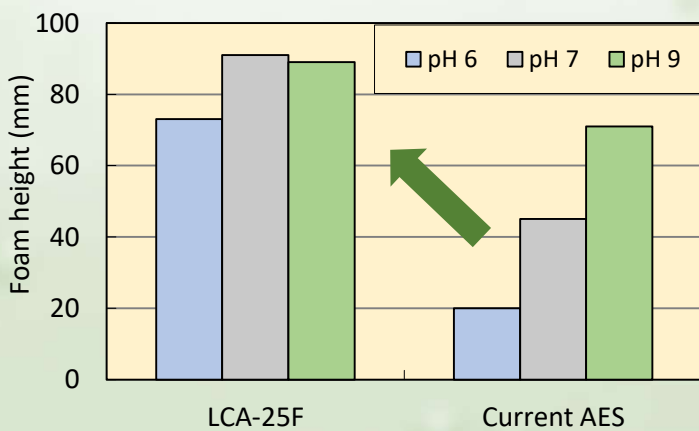


High foaming ability
High thickening effect

◆ Application Data

■ Foaming ability

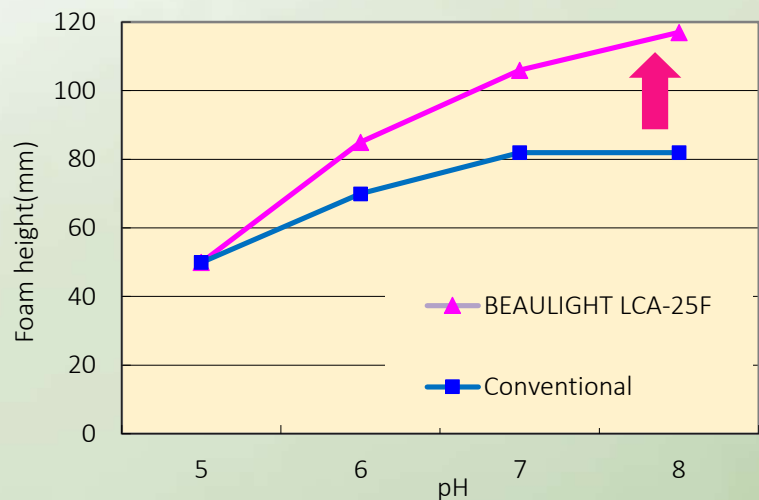
(effective concentration: 0.3%)



Good foaming over a wide pH range

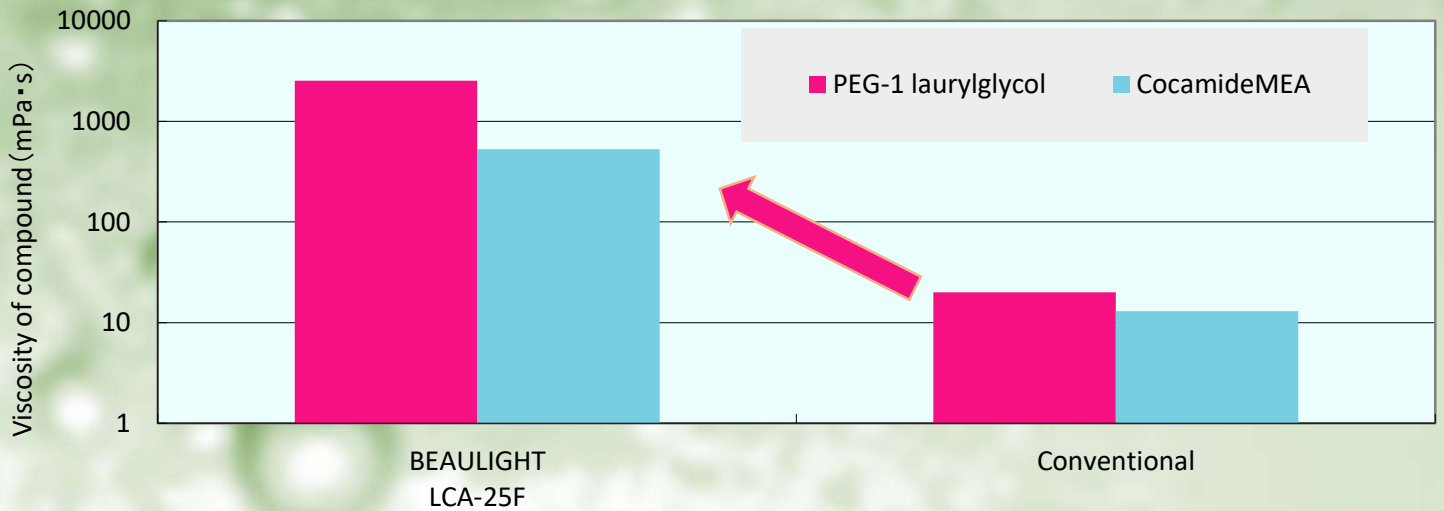
■ Bubbling ability

(effective concentration: 0.2%)



**All are "INCI: Sodium Laureth-4 Carboxylate",
but BEAULIGHT LCA-25F has
higher foaming ability than conventional**

■ Viscosity of compound



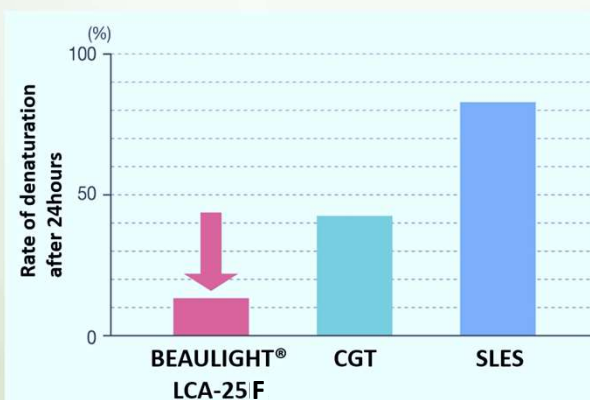
● Combination formula

Ingredients	Concentration of active ingredient (%)
Sodium Laureth-4 Carboxylate	13.0
Cocamidopropyl Betaine	3.0
Thickeners in table	3.0
Total	100.0(pH5.9)

BEAULIGHT LCA-25F has a higher degree of thickening effect than Conventional.

◆ Safety data

■ Protein denaturation



*1 CGT: TEA cocoyl glutamate

*2 SLES: Sodium laureth sulfate

Narrowing contributes to reduced protein denaturation

Test Method

Protein: 0.05% albumin solution

Active agent concentration: 1.0% aqueous solution of active ingredient (SLES (sodium laureth sulfate) is measured as a standard)

Bath ratio: albumin aqueous solution/activator aqueous solution = 9/1

Denaturation temperature: 20-25° C x 24 hours

Quantitative method: High performance liquid chromatography (HPLC)

Formula

Protein denaturation rate (%)=

$$\frac{\{(peak\ height\ of\ blank\ after\ 24h)-(peak\ height\ of\ sample\ solution\ after\ 24h)\}}{(peak\ height\ of\ blank\ after\ 24\ hours)} \times 100$$

■ Human test

- ✓ 24-hour occlusion human patch test: Safety
- ✓ RIPT: Safety

◆Formula

Shampoo formula for "Sulfate Free" & "Mild" Shampoo. This formula is low irritation and refreshing feeling.

	Ingredients (INCI)	Sanyo's Products	wt%	Purpose
A.	Water		17.75	Base
B.	Polyquaternium-10		0.50	Feel adjustment
	Polyquaternium-7		2.10	Feel adjustment
	Water		25.00	Base
C.	Cocamidopropyl Betaine	LEBON HC-30W	15.00	Cleaning agent
	Sodium Laureth-4 Carboxylate	BEAULIGHT LCA-25F	30.00	Cleaning agent
	Sodium Lauryl Glycol Carboxylate	BEAULIGHT SHAA	5.00	Cleaning agent
D.	Cocamide DEA		3.00	Cleaning agent
	PEG-1 Lauryl Glycol	NEWPOL DDE-10	1.00	Preservatives
	Phenoxyethanol		0.50	Preservatives
E.	Citric acid(10%aq.)		Appropriately	pH adjuster
	total		100.00	-

[Manufacturing Procedures]

- 1: Add B to A and mix thoroughly at 25°C and heat to 70-75°C.
- 2: C mix well and heat to 70-75 °C.
- 3: D mix well and heat to 70-75 °C.
- 4: Add C into (A+B) and mix well.
- 5: Add D into (A+B+C) and mix well.
- 6: Put E into (A+B+C+D) and adjust the pH. Cool and defoam.



◆History

BEAULIGHT LCA-25F has been used by many major Japanese cosmetic makers for 30 years. It is also used in baby-specific products and has a proven track record.



◆IMPORTANT

The Company is not liable for commercialization, including intellectual property rights owned by third parties, regarding the posting of this information. In addition, our company prohibits unauthorized reproduction and reproduction of the contents described in this document. The contents of this document may be changed at our convenience. Before handling these products, refer to the Safety Data sheet for recommended protective equipment, and detailed precautionary and hazards information.



For detailed information, please contact below.

**Sanyo
Chemical**

<https://www.sanyo-chemical.co.jp/eng/>